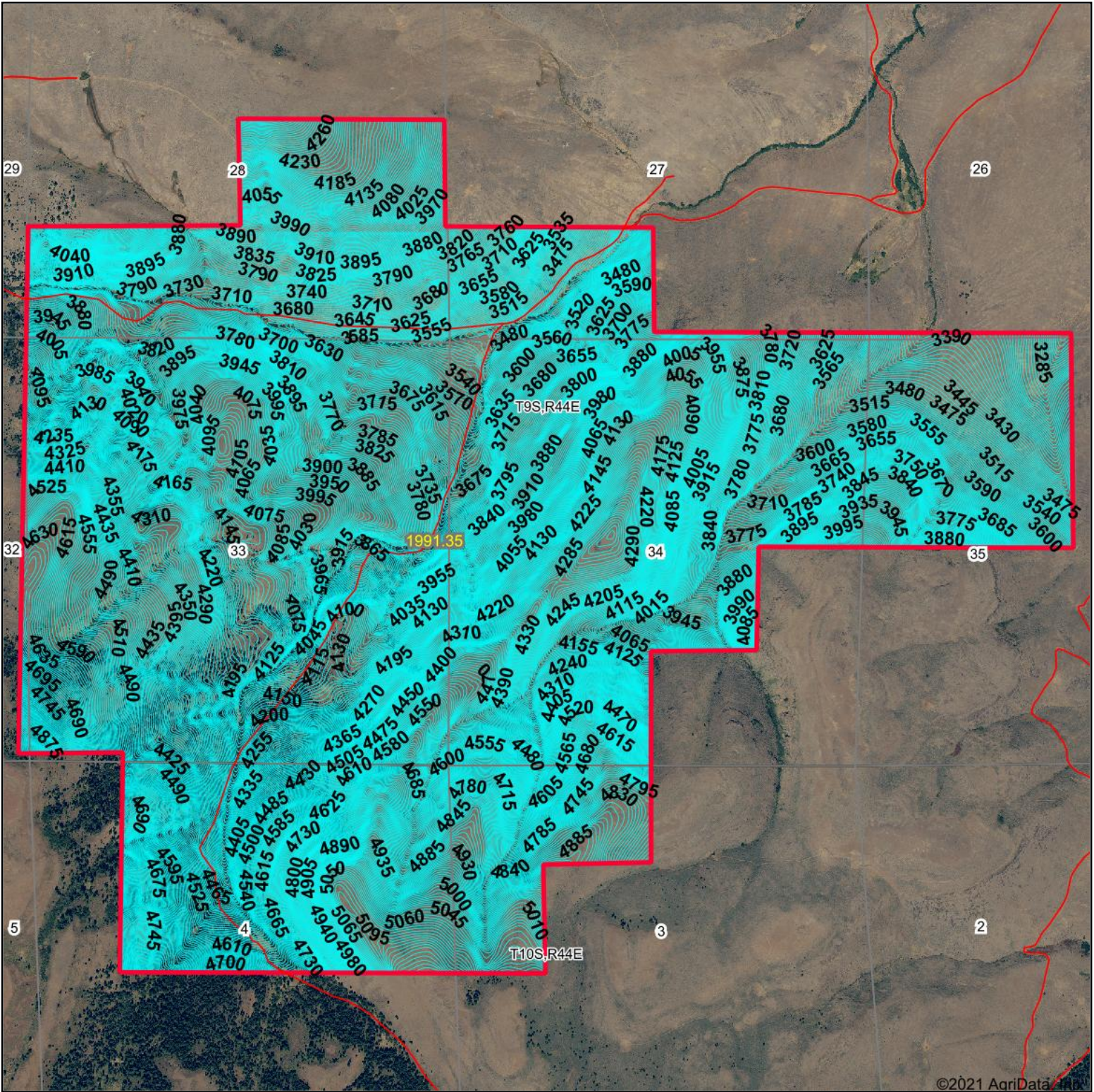


Topography Contours



©2021 AgriData, Inc.



Maps Provided By:



© AgriData, Inc. 2021 www.AgriDataInc.com

Source: USGS 10 meter dem

Interval(ft): 5.0

Min: 3,229.6

Max: 5,155.8

Range: 1,926.2

Average: 4,127.9

Standard Deviation: 430.58 ft

0ft 1937ft 3874ft



11/4/2021

11-9S-43E
Baker County
Oregon

Map Center: 44° 47' 47.98, -117° 25' 17.73