

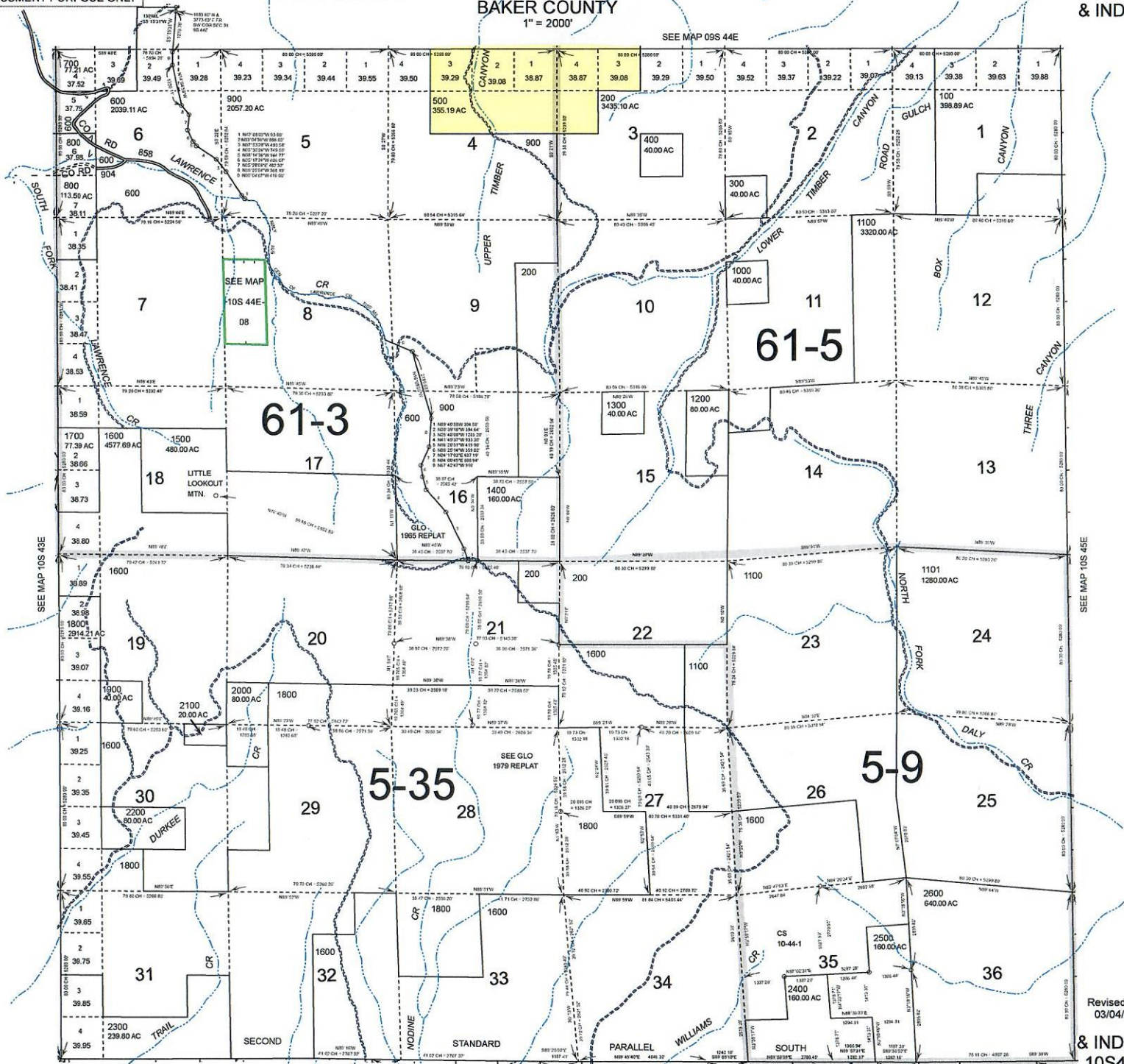
THIS MAP WAS PREPARED FOR ASSESSMENT PURPOSE ONLY

0 990 1,980 2,970 3,960 Feet

T.10S. R.44E. W.M.
BAKER COUNTY
1" = 2000'

10S44E
& INDEX

SEE MAP 09S 44E



SEE MAP 11S 44E

Revised: MA
03/04/2020

& INDEX
10S44E