

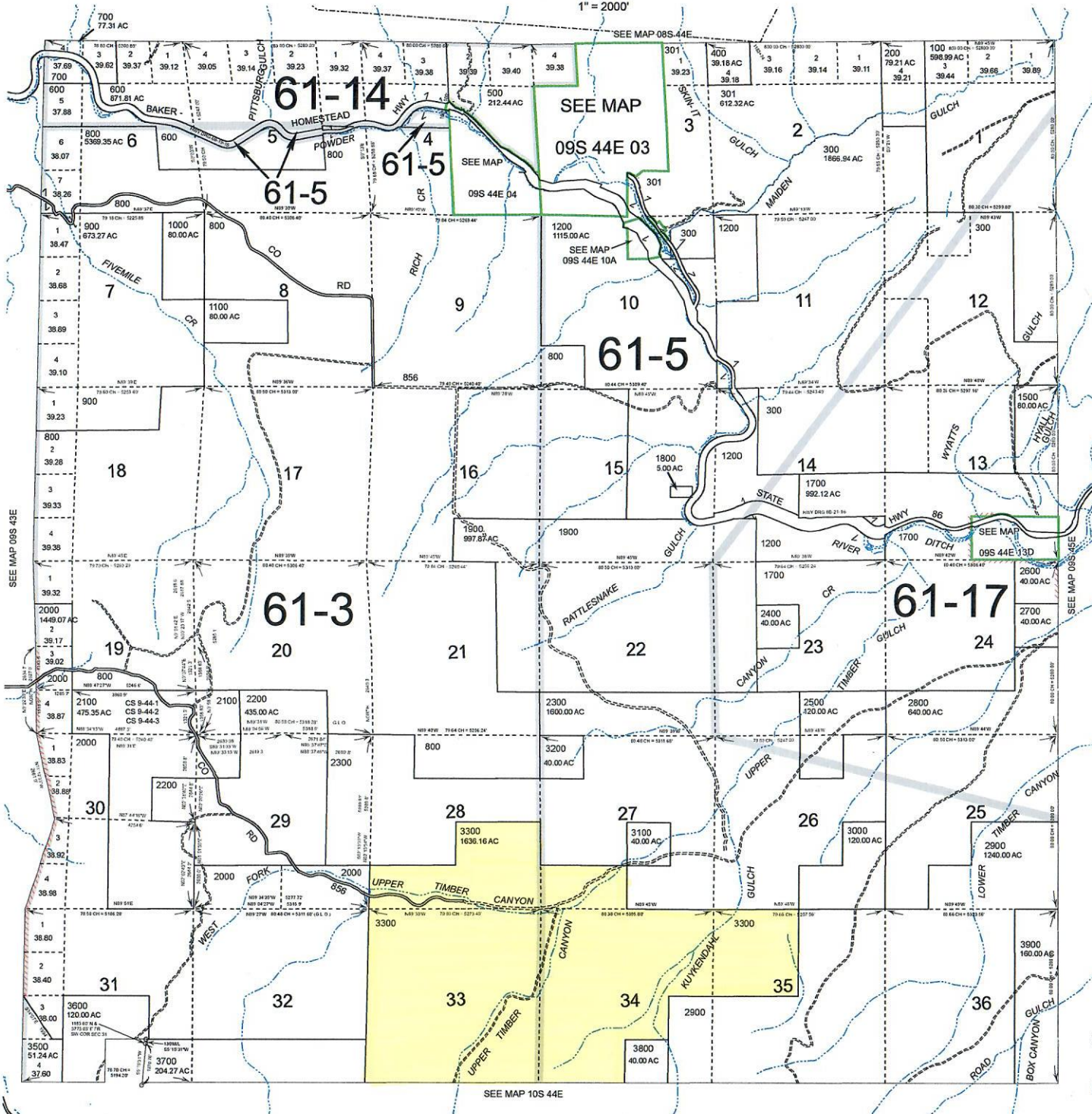
THIS MAP WAS PREPARED FOR ASSESSMENT PURPOSE ONLY

0 1,000 2,000 3,000 4,000 Feet

T.9S. R.44E. W.M.
BAKER COUNTY
1" = 2000'

09S44E

Cancelled
1300
1400
1600
3400



SEE MAP 10S 44E

Revised: DBJ
03/11/2015

09S44E