

THIS MAP WAS PREPARED FOR ASSESSMENT PURPOSE ONLY

0 1,000 2,000 3,000 4,000 Feet

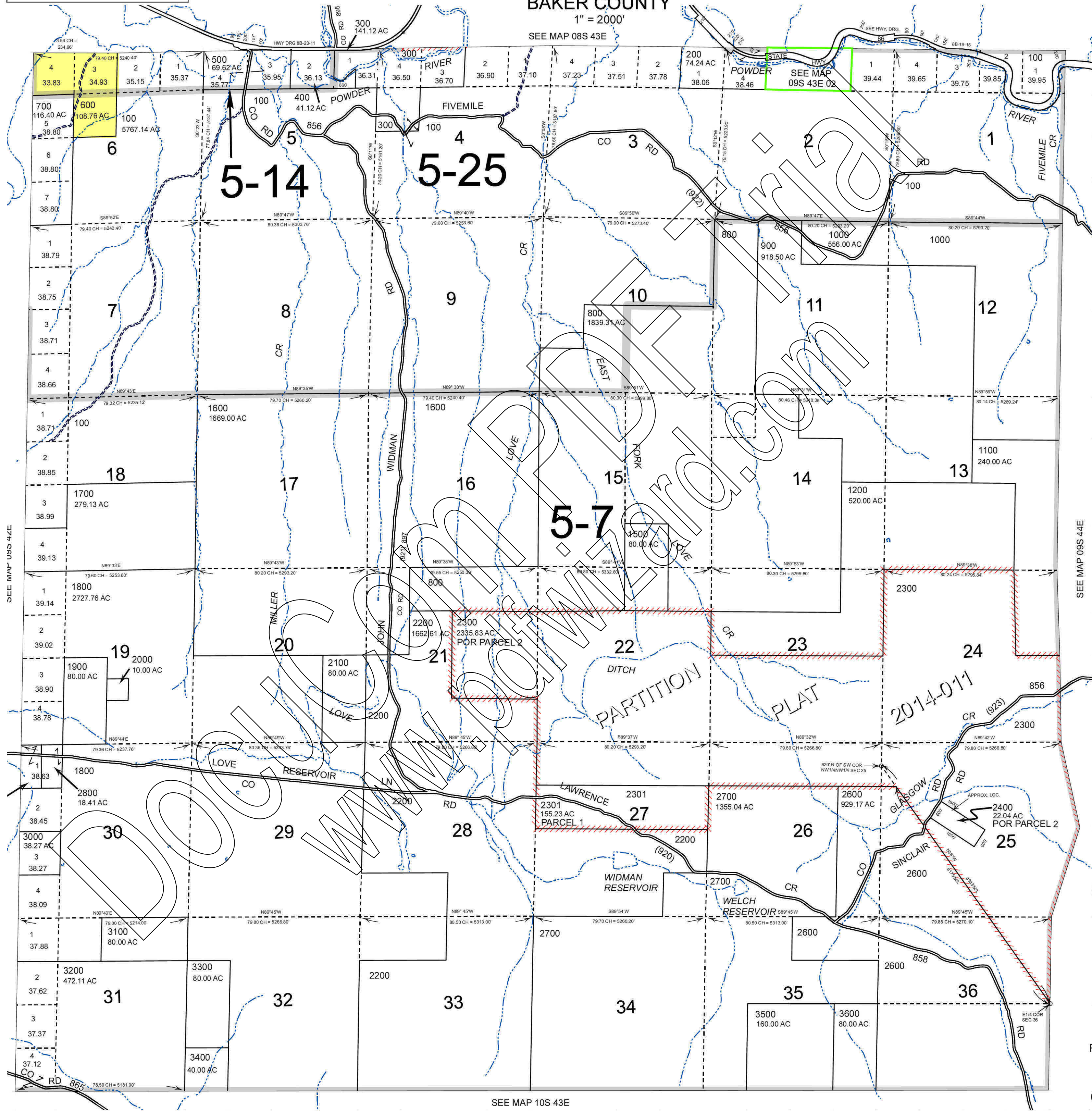
T.9S. R.43E. W.M. BAKER COUNTY

09S43E

1" = 2000'

SEE MAP 08S 43E

Cancelled
1300
1400
2500



SEE MAP 09S 44E

SEE MAP 09S 44E

SEE MAP 10S 43E

Revised: DBJ
03/10/2015

09S43E