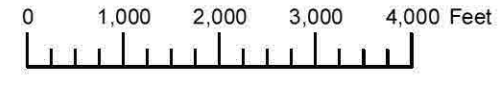


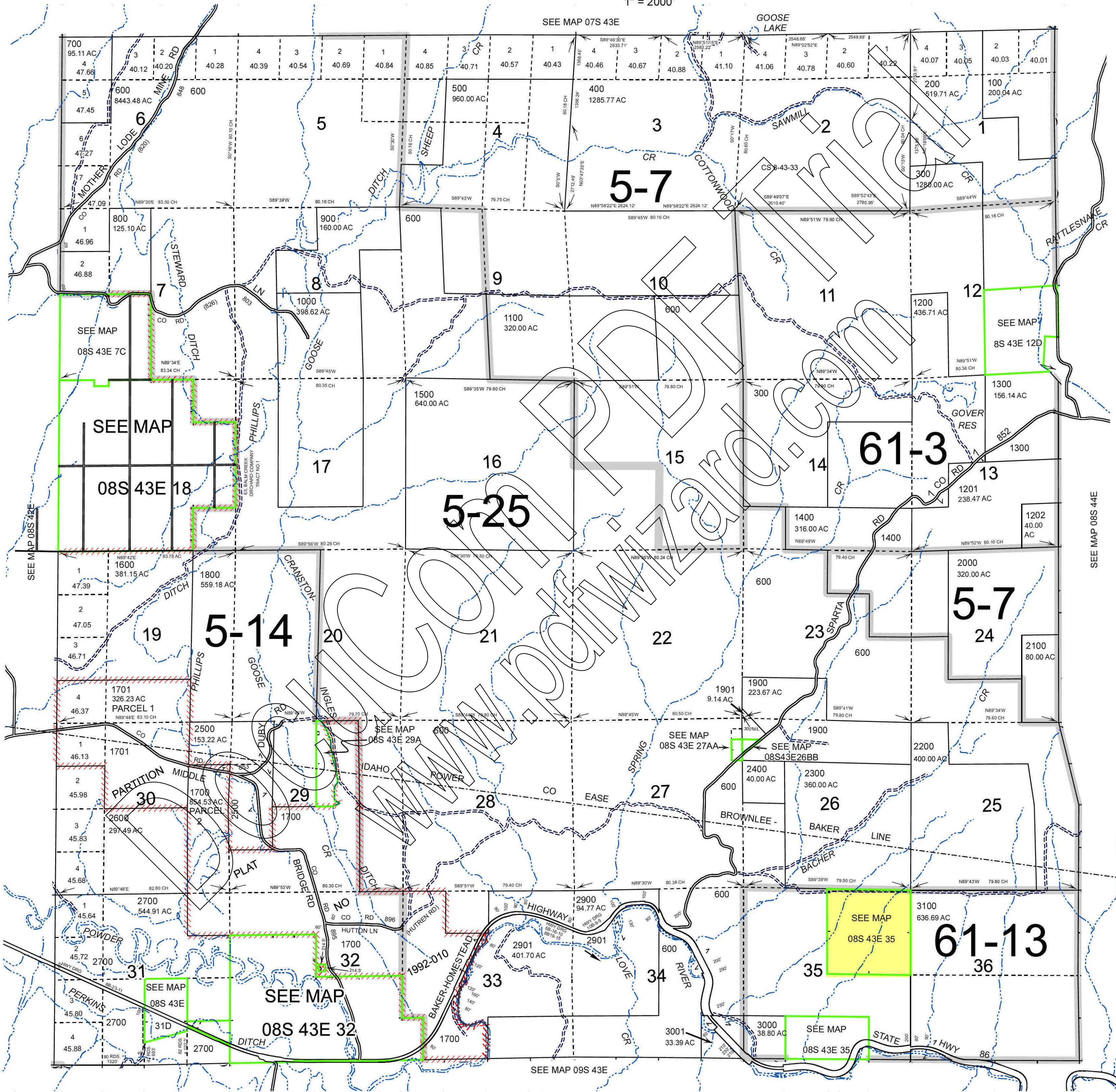
THIS MAP WAS PREPARED FOR ASSESSMENT PURPOSE ONLY



T.8S. R.43E. W.M. BAKER COUNTY 1" = 2000'

08S43E

Cancelled 2800 3200



SEE MAP 08S 44E

SEE MAP 09S 43E

Revised: TK 07/19/2016

08S43E