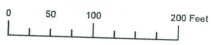


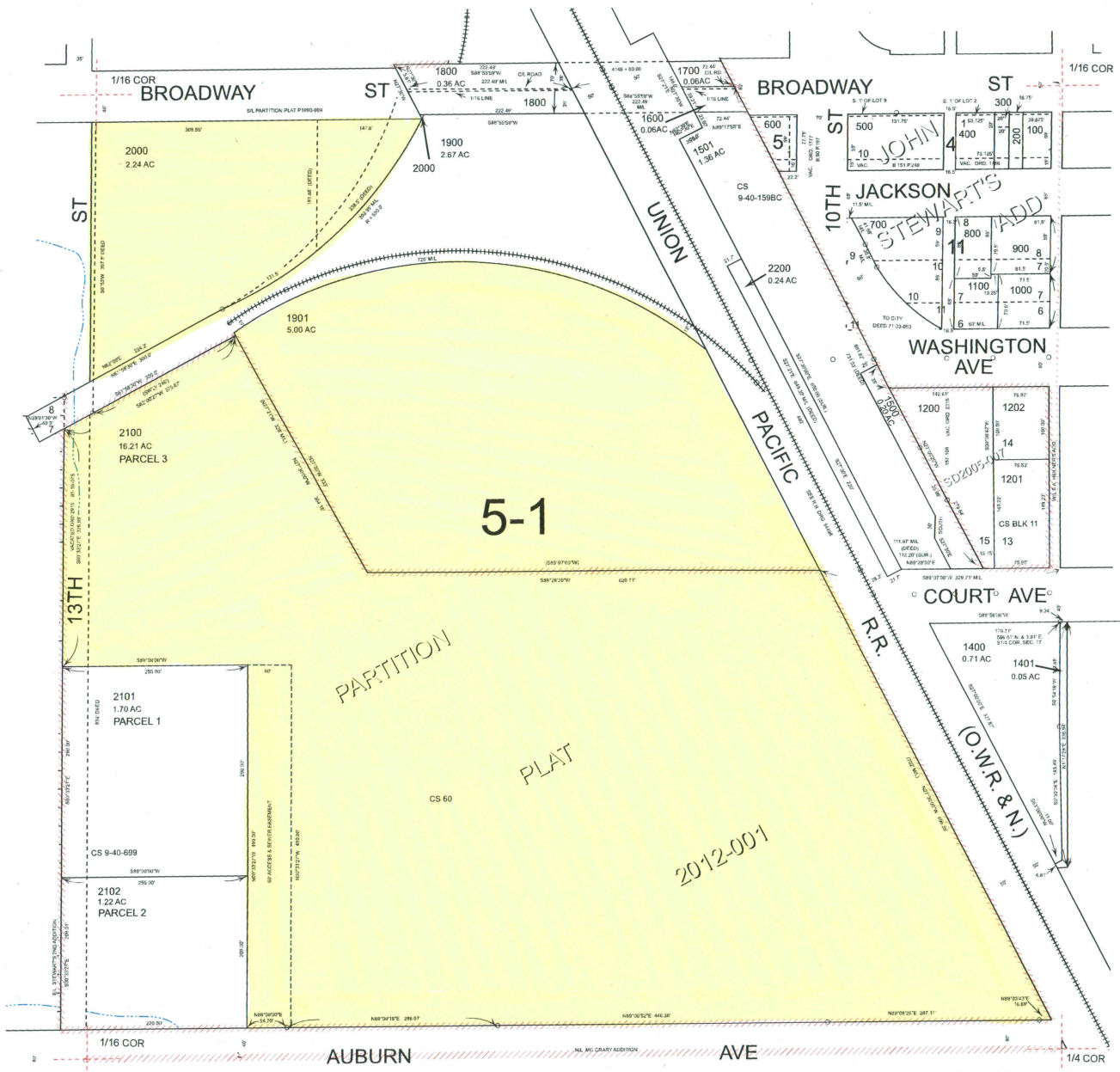
THIS MAP WAS PREPARED FOR ASSESSMENT PURPOSE ONLY



S.E.1/4 S.W.1/4 SEC.17 T.9S. R.40E. W.M. BAKER COUNTY 1" = 100'

09S40E17CD BAKER CITY

CANCELLED: 400U2 500U2 1300 1500M1 1501M1 1600M1 1901M1



2012-001