

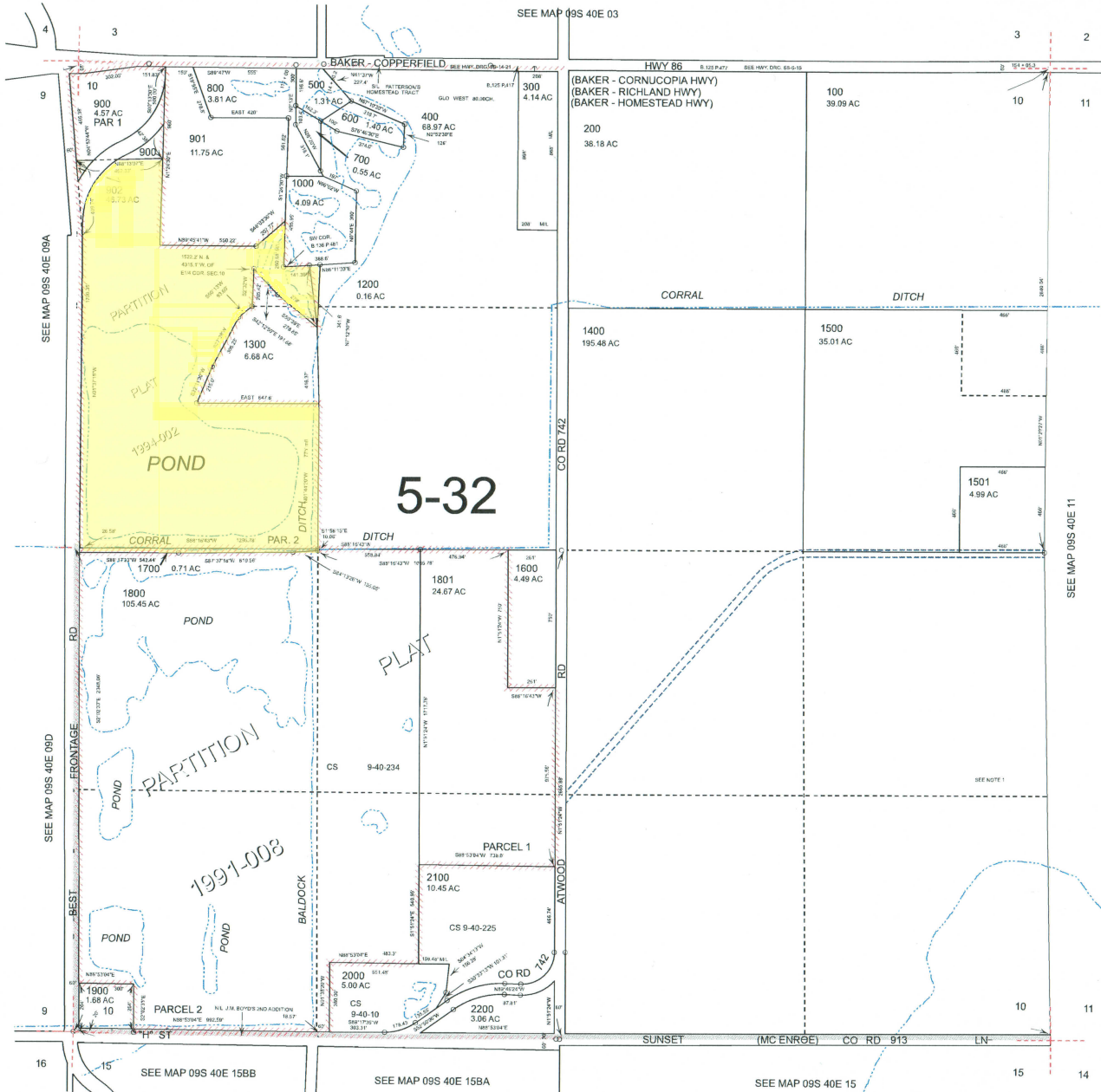
THIS MAP WAS PREPARED FOR ASSESSMENT PURPOSE ONLY

0 200 400 600 800 Feet

SECTION 10 T.9S. R.40E. W.M. BAKER COUNTY 1" = 400'

09S40E10 BAKER CITY

Cancelled 1100 1400M1 1800M1



Revised: DBJ 06/23/2014

BAKER CITY 09S40E10