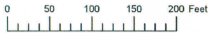


THIS MAP WAS PREPARED FOR ASSESSMENT PURPOSE ONLY

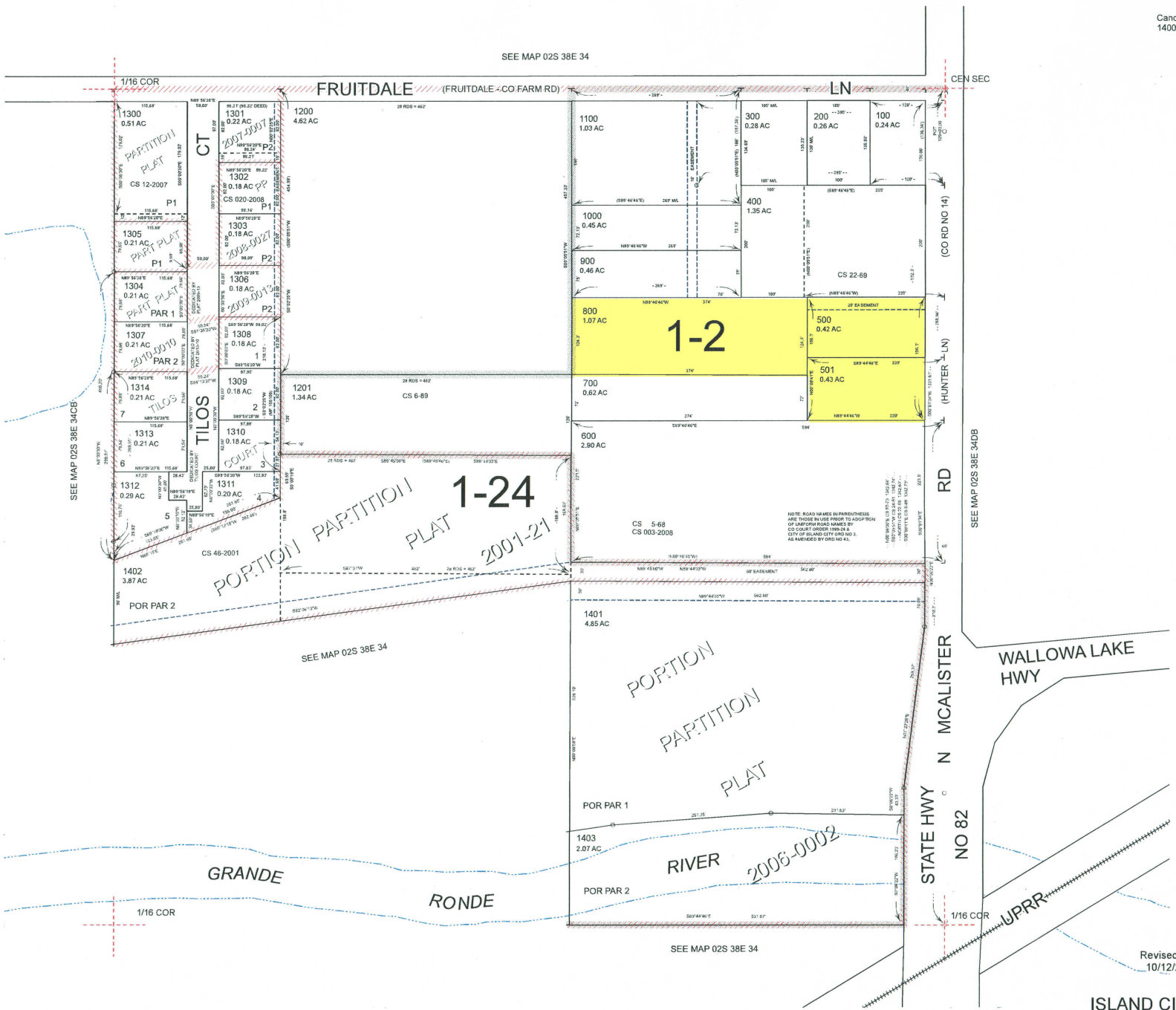


N.E. 1/4 S.W. 1/4 SEC. 34 T.2S. R.38E. W.M.
UNION COUNTY
1" = 100'

02S38E34CA
ISLAND CITY

Cancelled
1400

SEE MAP 02S 38E 34



SEE MAP 02S 38E 34CB

SEE MAP 02S 38E 34

SEE MAP 02S 38E 34

SEE MAP 02S 38E 34DB

NOTE: ROAD NAMES IN PARADISES ARE THOSE IN USE PRIOR TO ADOPTION OF CURRENT ROAD NAMES BY CS COURT ORDER 198-24 & CITY OF ISLAND CITY ORD NO 2 AS AMENDED BY ORD NO 41.

Revised: SH
10/12/2015

ISLAND CITY
02S38E34CA