

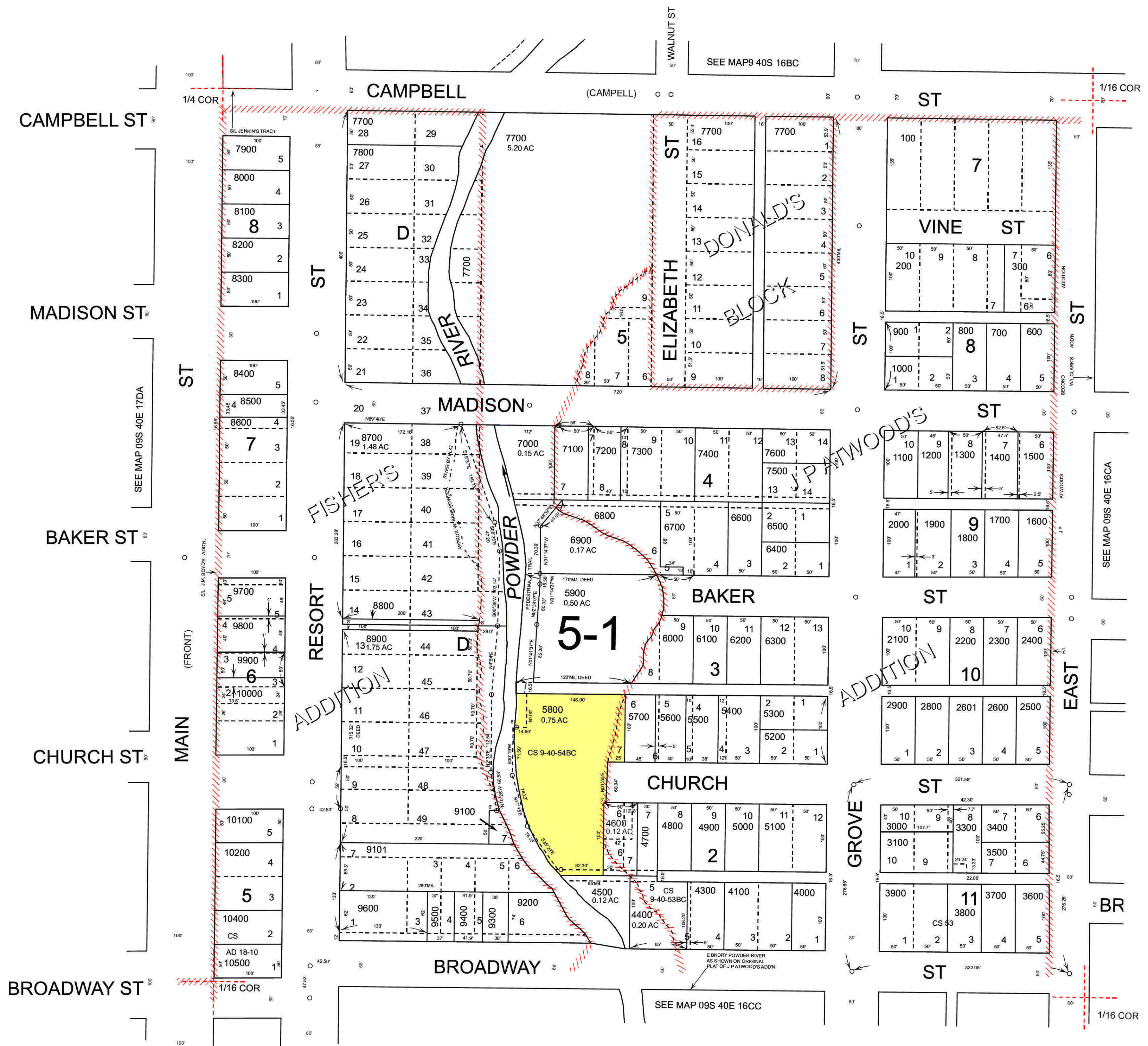
THIS MAP WAS PREPARED FOR ASSESSMENT PURPOSE ONLY

0 50 100 150 200 Feet

N.W.1/4 S.W.1/4 SEC.16 T.9S. R.40E. W.M. BAKER COUNTY 1" = 100'

09S40E16CB BAKER CITY

- Cancelled
- 400
- 500
- 2700
- 3200
- 4200
- 9000
- 10300



1/16 COR Revised: TK 04/01/2016

BAKER CITY 09S40E16CB