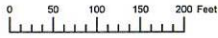
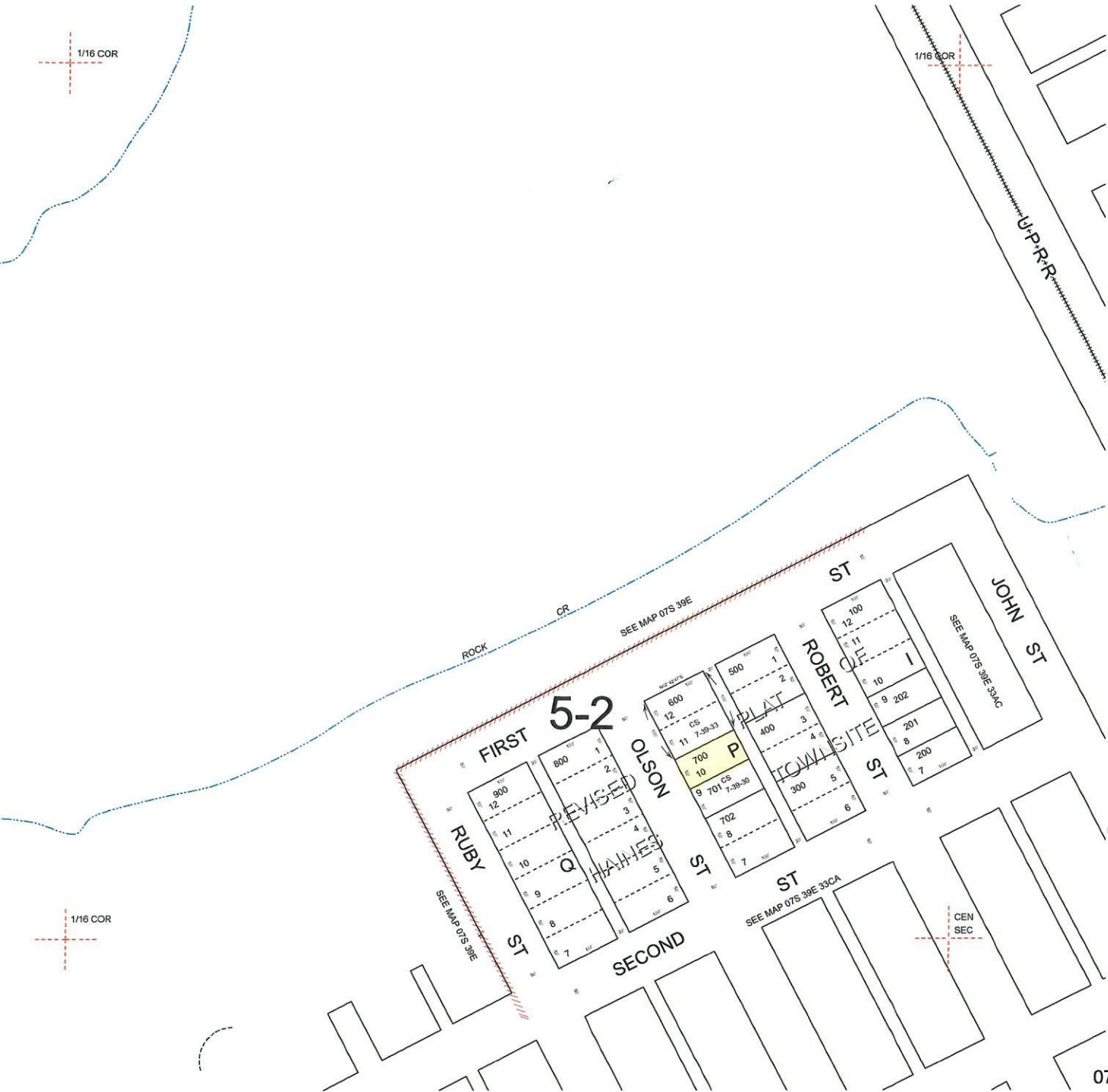


THIS MAP WAS PREPARED FOR
ASSESSMENT PURPOSE ONLY



S.E. 1/4 N.W. 1/4 SEC. 33 T.7S. R. 39E. W.M.
BAKER COUNTY
1" = 100'

07S39E33BD
HAINES



Revised: DBJ
07/26/2005

HAINES
07S39E33BD