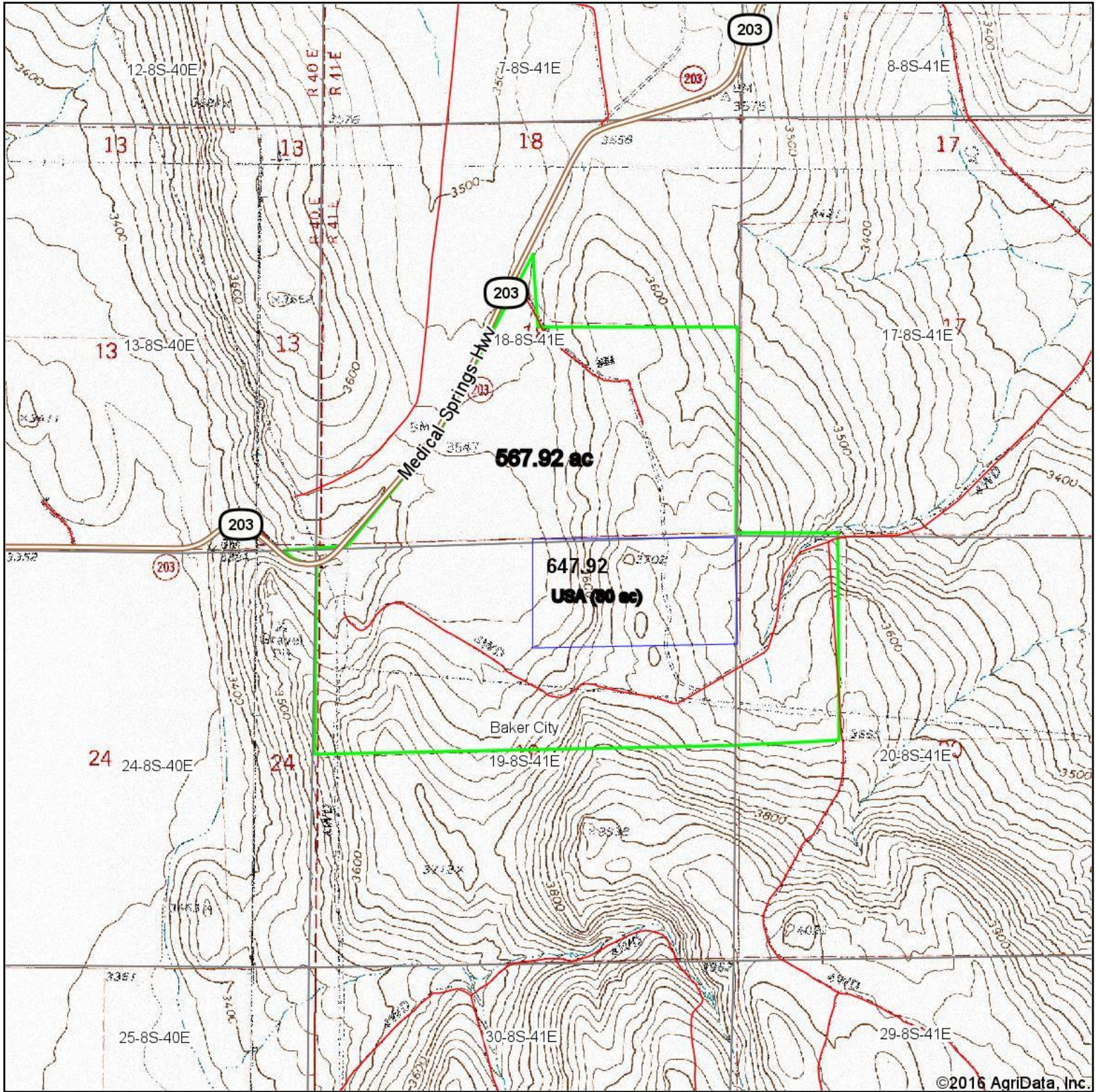


# Topography Map



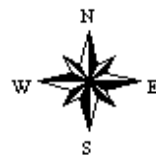
map center: 44° 51' 42.01, -117° 44' 12.52

0ft 1965ft 3930ft

  
Intermountain  
Realty, Inc.

Maps Provided By:  
  
CUSTOMIZED ONLINE MAPPING  
© AgriData, Inc. 2016 www.AgriDataInc.com

**19-8S-41E**  
**Baker County**  
**Oregon**



1/9/2017