

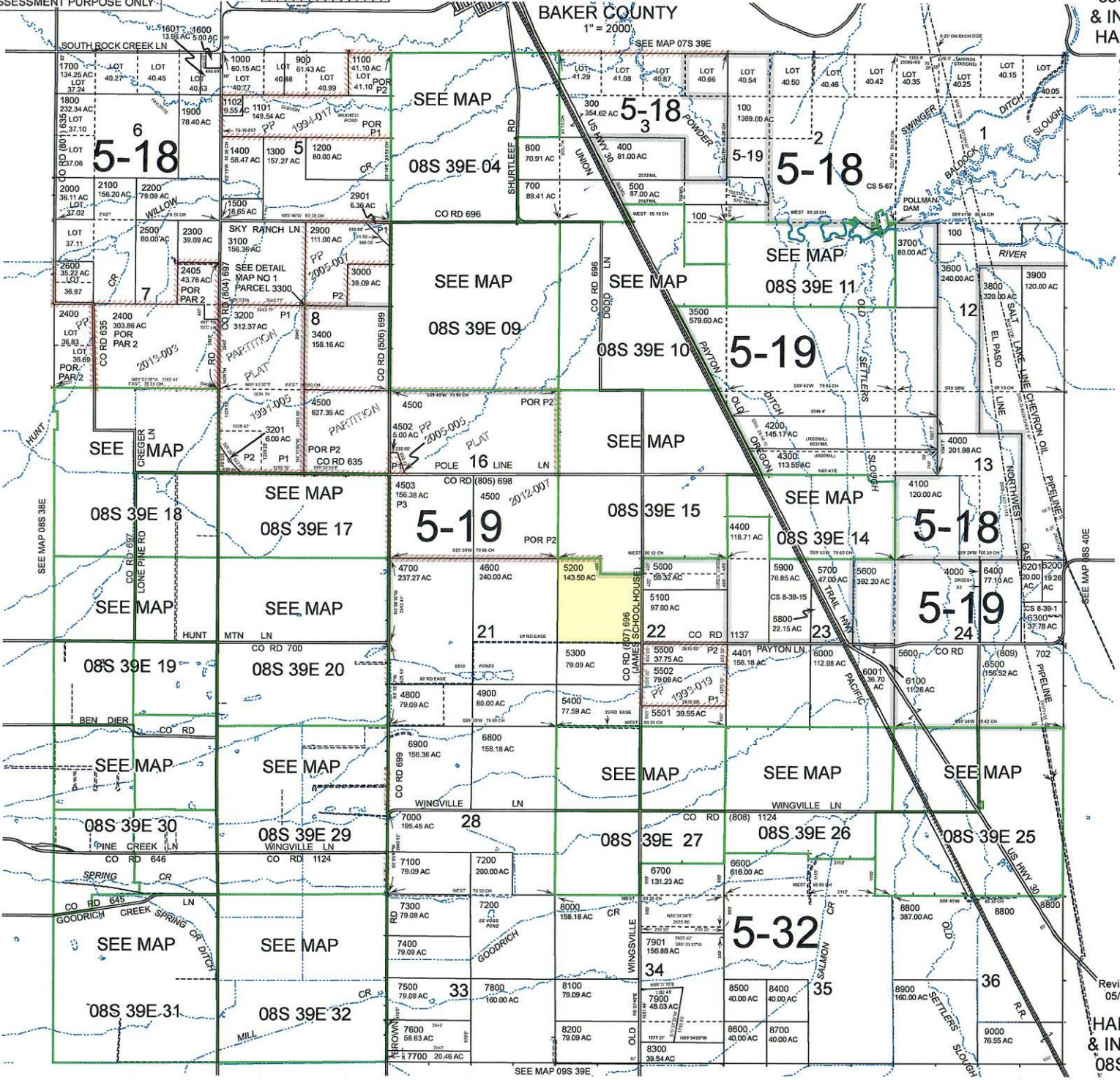
THIS MAP WAS PREPARED FOR ASSESSMENT PURPOSE ONLY.

0 1,000 2,000 3,000 4,000 Feet

T.8S. R.39E. W.M. BAKER COUNTY 1" = 2000'

08S39E & INDEX HAINES

Cancelled 100 200 600 2401 2402 2403 2404 2601 2700 2800 4501



Revised: MA 05/14/2021

HAINES & INDEX 08S39E

SEE MAP 09S 39E.